



# The Lake Country Series

*14' Wide Single Section Homes*



# The Lake Country Series

## 14' Wide Single Section Homes

### Standards and Specifications

#### Exterior

- ◆ Maintenance Free Vinyl Siding
- ◆ Fibreglass Shingles
- ◆ Nominal 4/12 roof pitch
- ◆ Attic Insulation: R-40 (*Common Areas*) R-32 (*Vaulted Areas*)
- ◆ Perimeter Eave Venting System
- ◆ Coach Lights at all Exterior Doors
- ◆ 6-Panel Insulated Exterior Doors
- ◆ Low E & Argon Gas Thermal Pane PVC Windows with Screen and Safety Latch
- ◆ Residential 8' Walls
- ◆ 2x6 Exterior Walls @ 24" o.c. with 3 Belt Rails and R-22 Insulation
- ◆ 19/32" T&G OSB Floor Sheathing - Screwed and Glued
- ◆ 2x8 Floor Joists with R31 Insulation
- ◆ Box Steel Frame with Detachable Hitch
- ◆ Exterior G.F.I. Receptacle
- ◆ Frost Free Exterior Tap
- ◆ Poly Vapour Barrier

#### Interior

- ◆ Cathedral Ceiling in Living Room, Kitchen and Dining Area
- ◆ Residential Textured Ceilings
- ◆ Flat-Panel White Interior Doors
- ◆ Carpet in Living Room and Master Bedroom (Most Models)
- ◆ Linoleum Elsewhere
- ◆ Designer Light Package
- ◆ Designer Hardware Package
- ◆ 2" Blinds Throughout

#### Kitchen

- ◆ Rangehood with Two Speeds and Light, Vented to Exterior
- ◆ Stainless Steel Double-Bowl Kitchen Sink
- ◆ Single-Lever Faucet with Sprayer
- ◆ Modular PVC Cabinets with Designer Hardware
- ◆ Full Cabinet Doors on Lowers
- ◆ Bank of Drawers (4 drawers)
- ◆ Deep Cabinet over Refrigerator
- ◆ 18 Cu. Ft. 2-Door Frost Free Refrigerator
- ◆ 30" Easy Clean Electric Range
- ◆ 6" x 6" Tile Backsplash

#### Bathroom

- ◆ One Piece Tub and Shower with Single-Lever Faucet
- ◆ Dual Handle Vanity Faucets
- ◆ Raised Toilet with Dual-Flush Control
- ◆ Designer Light Fixture over Vanity
- ◆ Curved Shower Rod with Liner
- ◆ 4" x 4" Spa-white Tile Backsplash
- ◆ Exhaust Fan
- ◆ G.F.I. Protected Receptacle
- ◆ Privacy Lock

#### Utilities

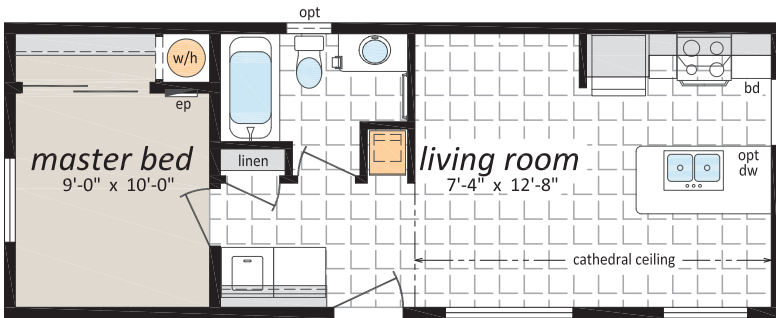
- ◆ 100 Amp Electrical Panel
- ◆ 40 Gallon (IMP) Electric Water Heater
- ◆ High-Efficiency A/C Ready Natural Gas Furnace with Electronic Ignition
- ◆ Smoke/CO Detectors
- ◆ Plumbed and Wired for Washer and Dryer
- ◆ Shelving over Washer/Dryer Area
- ◆ Wall Mounted TV rough-in, Living Room
- ◆ Heat Tape Receptacle
- ◆ Built to CSA Z-240 Standard



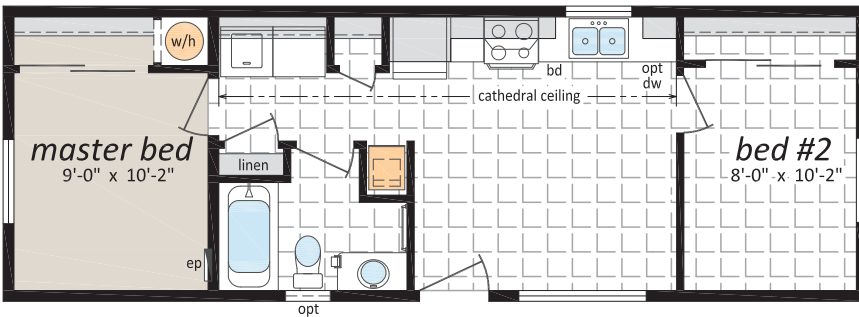
# The Lake Country Series

14' Wide Single Section Homes

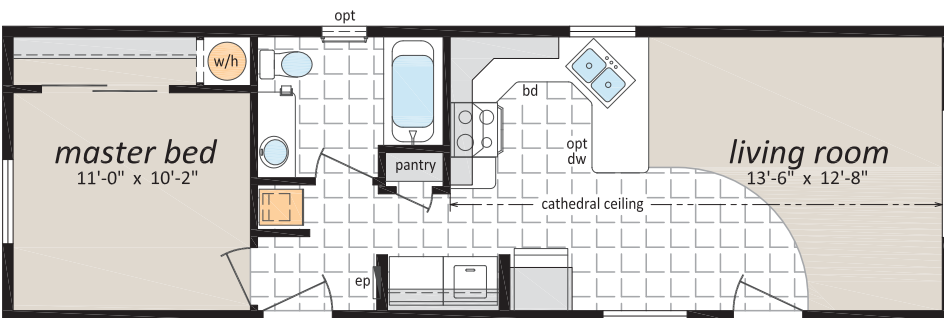
**LC-836, "The Adams"** 14' x 36' - 504 sq.ft.



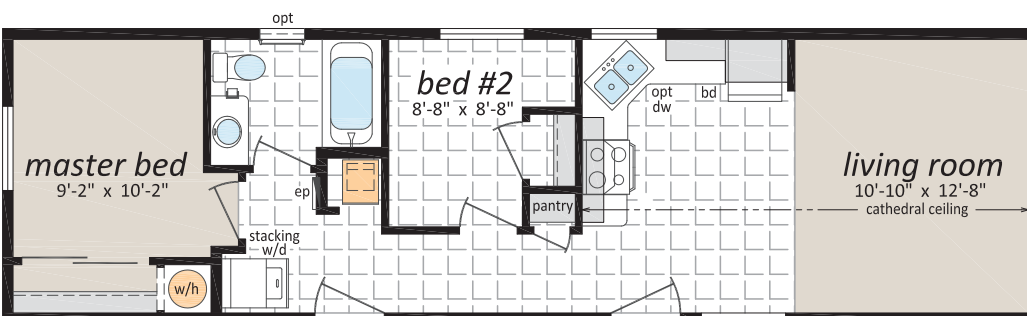
**LC-841 "The Clearwater"** 14' x 40' - 560 sq.ft.



**LC-844, "The Garibaldi"** 14' x 44' - 616 sq.ft.



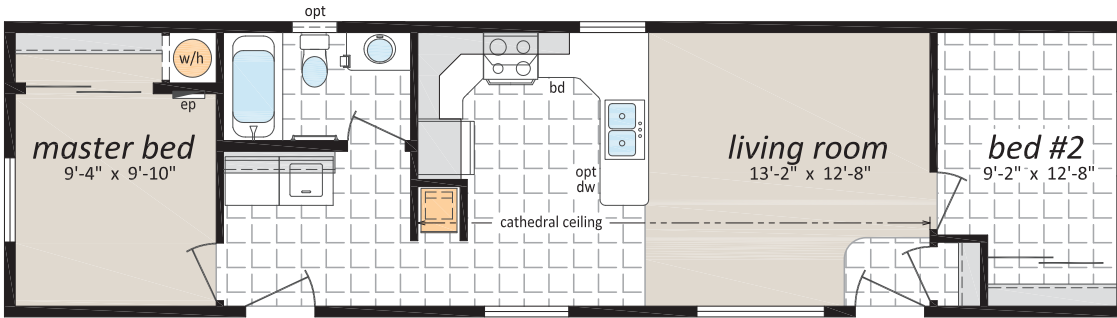
**LC-848, "The Kokanee"** 14' x 48' - 672 sq.ft.



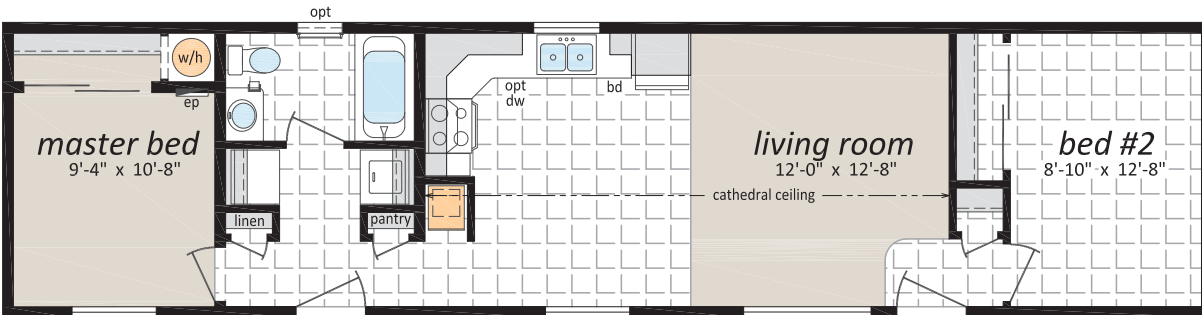
# The Lake Country Series

## 14' Wide Single Section Homes

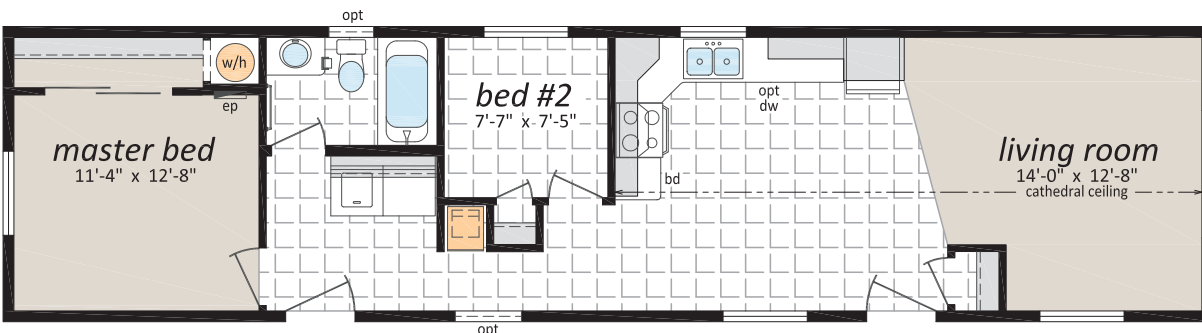
**LC-852, "The Kootenay"** 14' x 52' - 728 sq.ft.



**LC-856, "The Nechako"** 14' x 56' - 784 sq.ft.



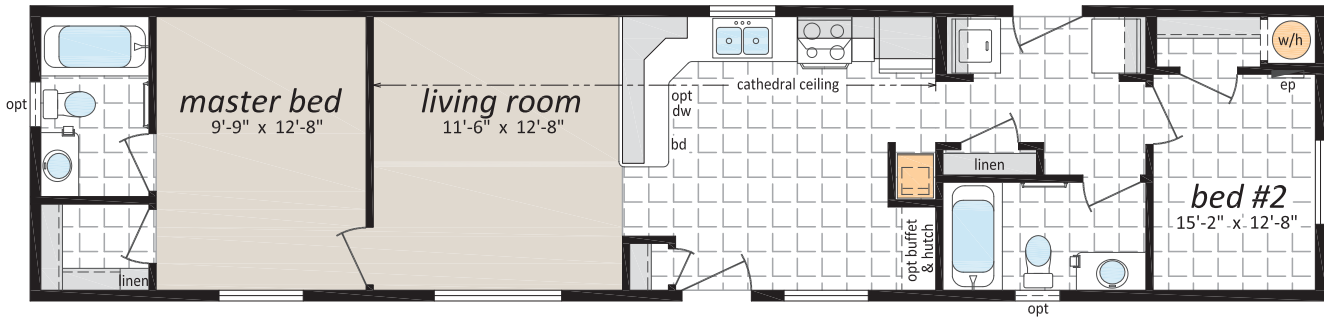
**LC-805, "The Shuswap"** 14' x 56' - 784 sq.ft.



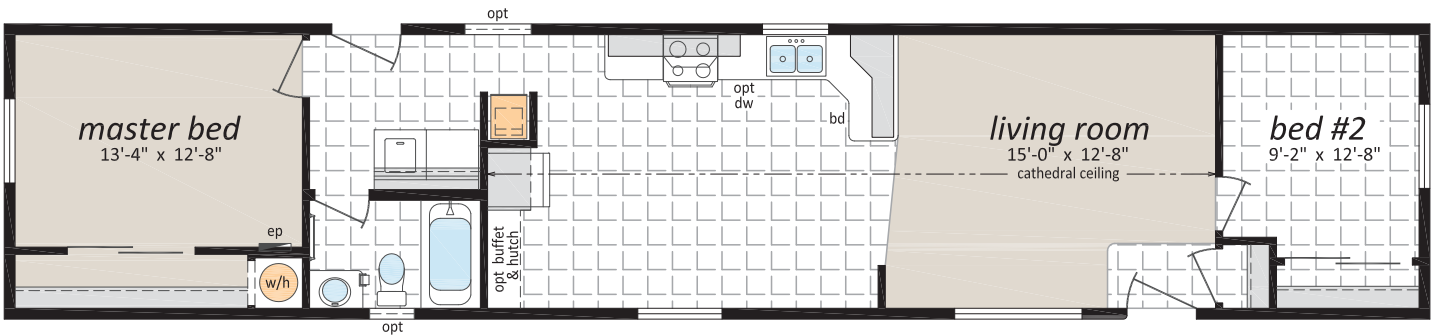
# The Lake Country Series

## 14' Wide Single Section Homes

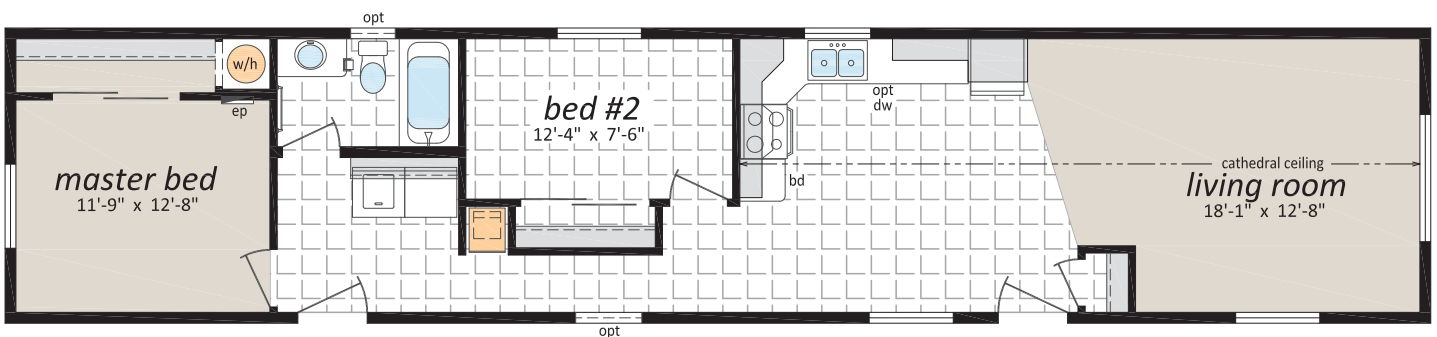
**LC-862, "The Takla"** 14' x 60' - 840 sq.ft.



**LC-810, "The Colwood"** 14' x 66' - 924 sq.ft.

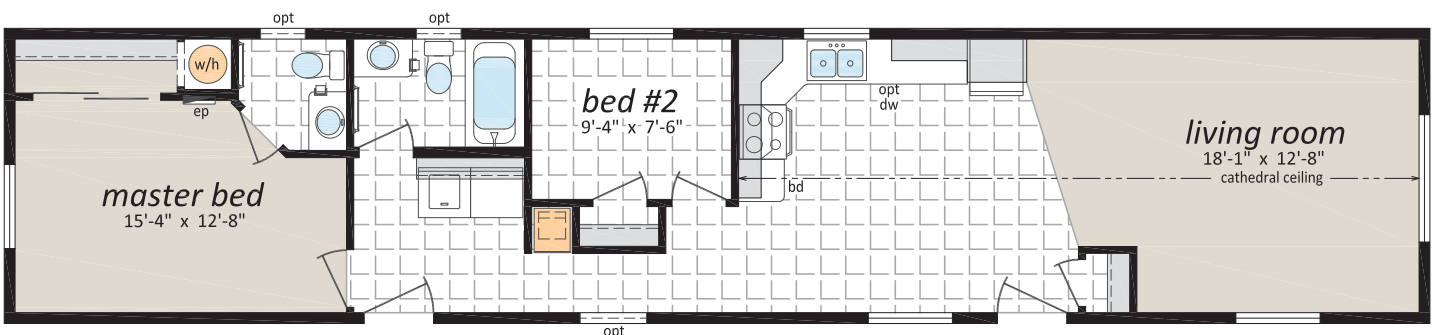


**LC-830, "The Kelsey"** 14' x 66' - 924 sq.ft.



**LC-835, "The Cowichan"** 14' x 66' - 924 sq.ft.

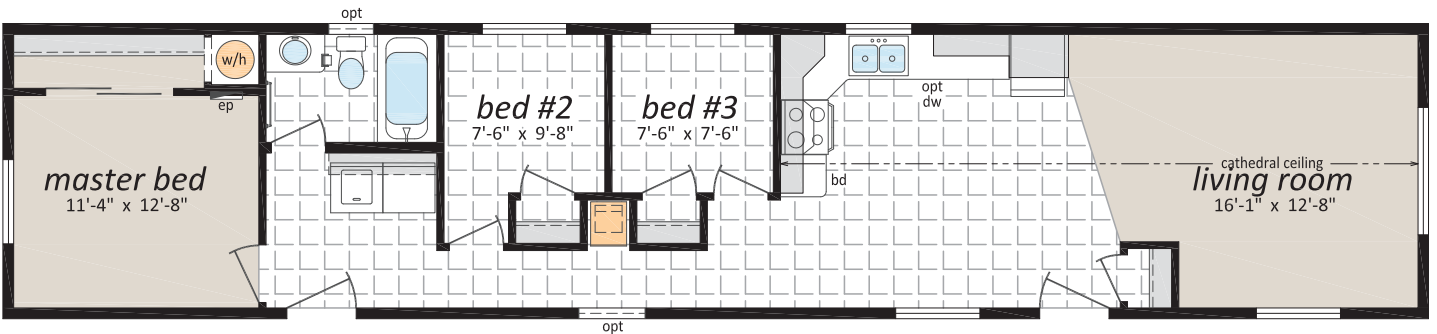
(Note: Artist Rendering shown on cover page)



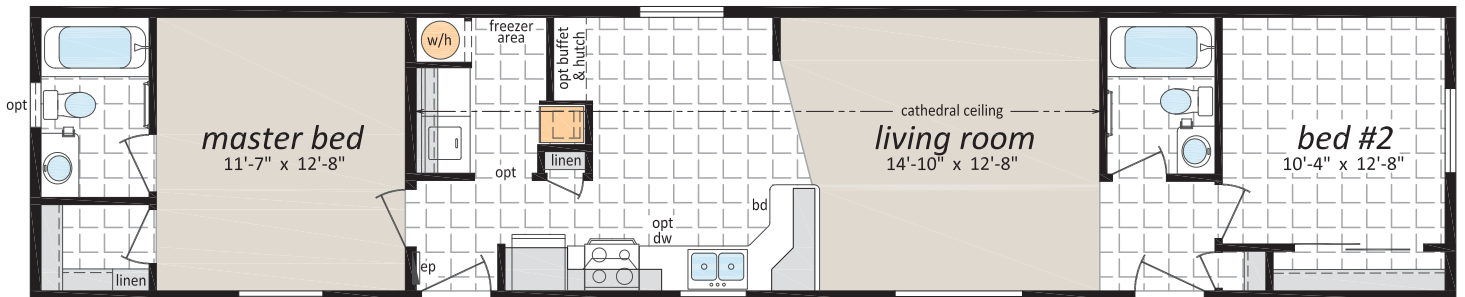
# The Lake Country Series

## 14' Wide Single Section Homes

**LC-850, "The Langdale"** 14' x 66' - 924 sq.ft.



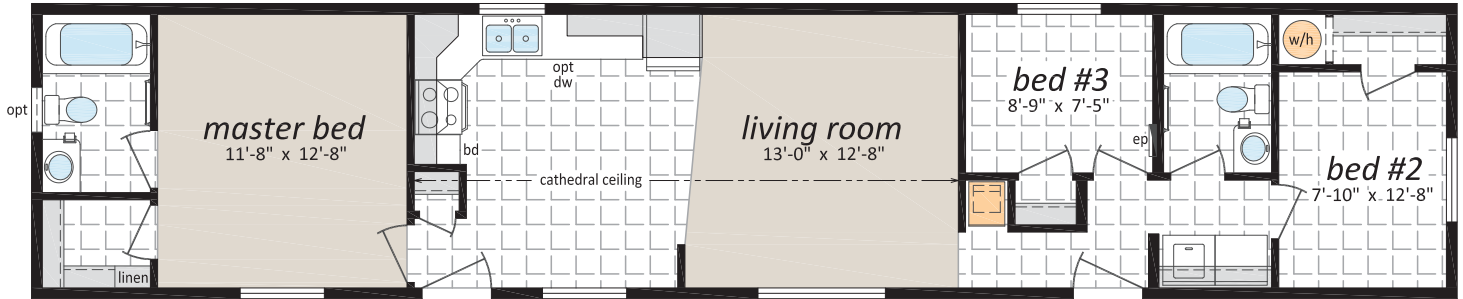
**LC-860, "The Christina"** 14' x 66' - 924 sq.ft.



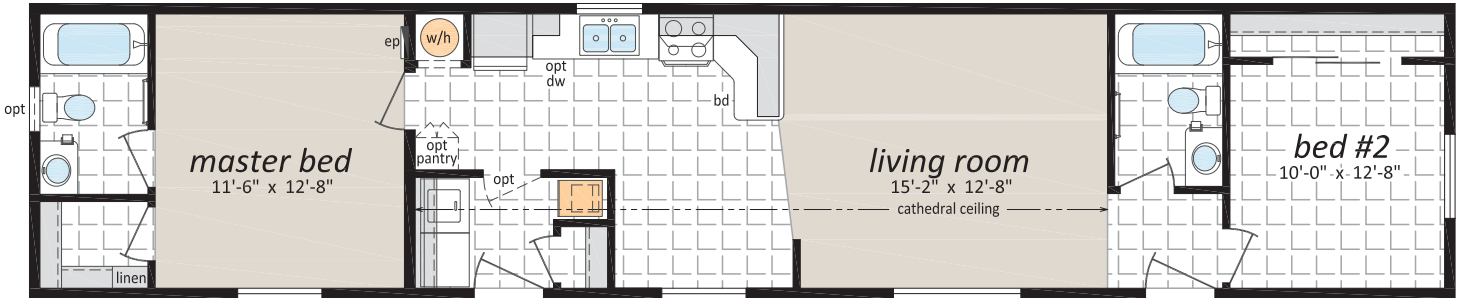
# The Lake Country Series

## 14' Wide Single Section Homes

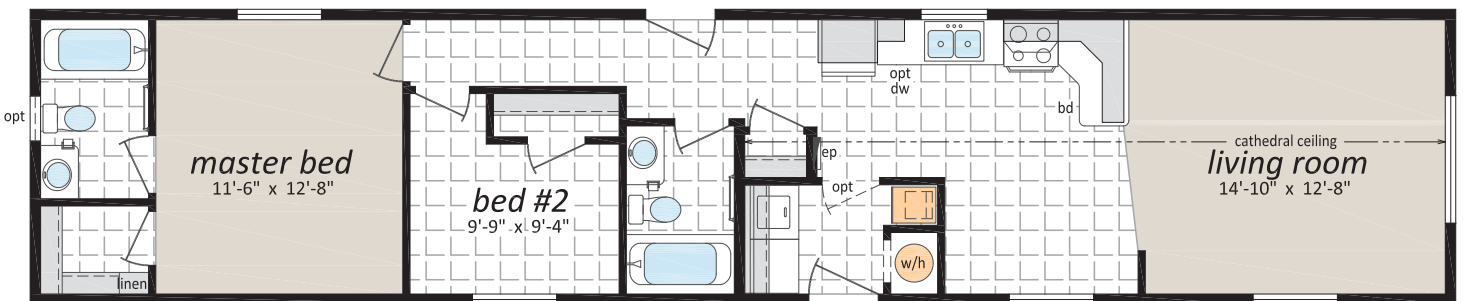
**LC-868, "The Kalamalka"** 14' x 66' - 924 sq.ft.



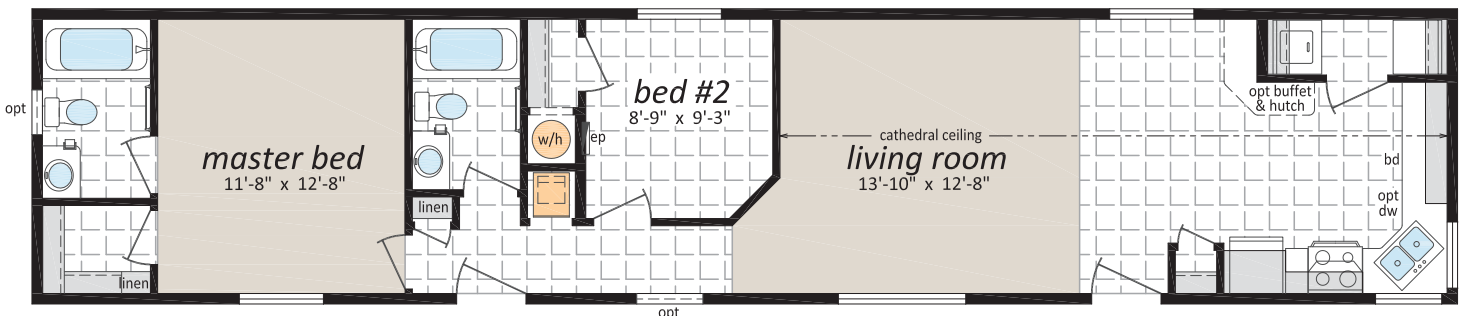
**LC-870, "The Logan"** 14' x 66' - 924 sq.ft.



**LC-875, "The Williston"** 14' x 66' - 924 sq.ft.



**LC-880, "The Stuart"** 14' x 66' - 924 sq.ft.



# The Lake Country Series

14' Wide Single Section Homes



Proudly made in  
**Canada**  
to Canadian  
Standards

## Popular Optional Features

### Exterior

- Hardie Siding
- Third Gables
- Painted "Smart Start" Fascia, Window and Door Trim
- Painted Smart Start Shutters
- Faux Rock or Shake Accents
- Garden and Patio Doors
- Exterior Door with Victoria, 9 Lite, Harlow or Niagara Insert
- "Ladder" Grids in Windows
- Bay Windows
- Skylights
- Octagon Vents
- Electric Door Chimes
- Extra Exterior GFI
- Solar Tubes

### Interior

- Upgrade Trim Package
- White Painted Trim Upgrade
- Painted Drywall with Ceiling Cove Moulding
- Conmore White Passage Doors
- Upgrade Lino
- Carpeting in 2nd and 3rd Bedrooms
- 2" Faux Wood Blinds
- French Doors
- Utility Room Door with Grill
- Freezer Cabinets
- Laundry Cabinets
- Soak Sink with Cabinet
- Ceiling Fan with Lights
- Gas Fireplace with Fan and Mantle
- Electric Fireplace with Mantle
- LED Downlights

### Kitchen

- Natural Wood Cabinet Doors
- Island Work Centre
- Upgrade High Definition Counter Laminate
- Upgrade High Definition Bevelled Counter Edging
- Wood Reveal Counter Edging
- Appliance Garage
- Multi Row Tile Backsplash
- Pullout Trash and Recycle bins
- Pantry Cabinets
- Additional Bank of Drawers
- Planning Centre
- Lazy Susan
- Black Sink
- Upgrade Moen Faucets
- Built-In Dishwasher
- Combination Microwave/Range Hood
- Eye Level Oven with Cook Top
- Ceramic Top Self Cleaning Range
- Two Door Side by Side Refrigerator (with water and ice maker)
- Stainless Appliances
- Stainless Steel Canopy Range Hood

### Bathroom

- Oval Tub or Corner Oval Tub
- Jetted Spa Option (available on any tub)
- 2 Person Jetted Tub
- 36", 48" or 60" Shower Stall
- Low Barrier Shower
- Grab Bars
- Assorted Medicine Cabinets

### Utilities

- On Demand Water Heater
- 40 Gallon U.S. Gas Water Heater
- Baseboard Heating
- Forced Air Electric Furnace
- Heat Recovery Ventilation Unit
- Stacking Washer and Dryer
- Front Loading Washer and Dryer
- Central Vacuum System
- Roughed in for Central Vacuum
- 200 Amp Service Panel
- Extra Telephone /Cable Box(es)
- Pre-wire for Telephone and/or Cable



Authorized Retailer:



This is not a fully detailed specification. SRI Kelowna reserves the right to change specifications, designs, materials and suppliers without notice and without incurring obligation. Information contained herein is from data available at the time of printing. Square footage and dimensions are approximate. Furniture placement shown is for suggestion only. Photos and renderings may show optional features. 8/2021